

**BEFORE THE ILLINOIS POLLUTION CONTROL BOARD**

Newcomer Confinements, Inc. - Lanark )  
(Property Identification Number ) PCB 11-  
07-09-14-200-002 ) (Tax Certification)  
)  
)

**NOTICE**

Clerk  
Illinois Pollution Control Board  
James R. Thompson Center  
100 West Randolph Street, Suite. 11-500  
Chicago, Illinois 60601

John Newcomer  
26589 U.S. Hwy 52  
Lanark, Illinois 61046

Steve Santarelli  
Illinois Department of Revenue  
101 West Jefferson  
Post Office Box 19033  
Springfield, Illinois 62794

**PLEASE TAKE NOTICE** that I have today filed with the Office of the Clerk of the Pollution Control Board an **APPEARANCE AND THE RECOMMENDATION** of the Illinois Environmental Protection Agency, a copy of which is herewith served upon you.

ENVIRONMENTAL PROTECTION AGENCY  
OF THE STATE OF ILLINOIS

By: Vera Herst  
Vera Herst  
Assistant Counsel  
Division of Legal Counsel

DATED: December 15, 2010

Illinois Environmental Protection Agency  
1021 North Grand Avenue East  
Post Office Box 19276  
Springfield, Illinois 62794-9276  
(217) 782-5544

**THIS FILING IS SUBMITTED ON RECYCLED PAPER**

**BEFORE THE ILLINOIS POLLUTION CONTROL BOARD**

Newcomer Confinements, Inc. - Lanark	)
(Property Identification Number	) PCB 11-
07-09-14-200-002)	) (Tax Certification)
	)
	)

**A P P E A R A N C E**

The undersigned, as one of its attorneys, hereby enters an APPEARANCE on behalf of Respondent, Illinois Environmental Protection Agency.

ILLINOIS ENVIRONMENTAL PROTECTION AGENCY

By: Vera Herst  
 Vera Herst  
 Assistant Counsel  
 Division of Legal Counsel

DATED: December 15, 2010  
 Illinois Environmental Protection Agency  
 1021 North Grand Avenue East  
 Post Office Box 19276  
 Springfield, Illinois 62794-9276  
 (217)782-5544

**THIS FILING IS SUBMITTED ON RECYCLED PAPER**

BEFORE THE ILLINOIS POLLUTION CONTROL BOARD

Newcomer Confinements, Inc. - Lanark	)
(Property Identification Number	) PCB 11-
07-09-14-200-002)	) (Tax Certification)
	)
	)

RECOMMENDATION

The Illinois Environmental Protection Agency ("Illinois EPA") hereby files its Recommendation pursuant to Section 125.204 of the regulations of the Illinois Pollution Control Board, 35 Ill. Adm. Code 125.204.

1. On March 18, 2009, the Illinois EPA received a request from Newcomer Confinements, Inc.-Lanark (log number TC-07-09, Exhibit A) for an Illinois EPA recommendation regarding the tax certification of water pollution control facilities pursuant to 35 Ill. Adm. Code 125.204.
2. The applicant's address is:

Newcomer Confinements, Inc.
21404 Cyclone Ridge Road
Lanark, Illinois 61046
3. The proposed water pollution control facilities in this request are located at Part of North ½ of Section 14, T24N, R5E of the 4th P.M. in Carroll County, at the above street address and consist of the following:

Livestock waste management facilities consisting of one concrete manure pit (approximately 391 ft. x 51 ft. x 8 ft. deep) with 10 concrete pump out pits (approximately 5 ft. x 6 ft. x 8 ft deep) and the portion of the concrete slat flooring over the manure pits in building #3; and two 8-inch and one 6-inch manure transfer pumps

These livestock waste management facilities are used to collect, transport and/or store livestock wastes prior to cropland application, and are further described in Exhibit A.

4. Section 11-10 of the Property Tax Code, 35 ILCS 200/11-10 (2008), defines “pollution control facilities” as:

“any system, method, construction, device or appliance appurtenant thereto or any portion of any building or equipment, that is designed, constructed, installed or operated for the primary purpose of: (a) eliminating, preventing, or reducing air or water pollution ...or (b) treating, pretreating, modifying or disposing of any potential solid, liquid or gaseous pollutant which if released without treatment, pretreatment modification or disposal might be harmful, detrimental or offensive to human, plant or animal life, or to property.”
5. Pollution control facilities are entitled to preferential tax treatment, 35 ILCS 200/11-5.
6. Based on the information in the application and the purpose of the facilities, it is the Illinois EPA’s engineering judgment that the described facilities may be considered “pollution control facilities,” pursuant to 35 Ill. Adm. Code 125.200(a), with the primary purpose of eliminating, preventing, or reducing water pollution, or as otherwise provided in 35 Ill. Adm. Code 125.200, and are eligible for tax certification from the Board.

WHEREFORE, the Illinois EPA recommends that the Board issue the

requested tax certification.

ILLINOIS ENVIRONMENTAL  
PROTECTION AGENCY

By: Vera Herst  
Vera Herst  
Assistant Counsel  
Division of Legal Counsel

Dated: December 16, 2010  
Illinois Environmental Protection Agency  
1021 North Grand Ave. E.  
P.O. Box 19276  
Springfield, Illinois 62794-9276  
217/782-5544



**ILLINOIS ENVIRONMENTAL PROTECTION AGENCY**


1021 North Grand Avenue East, P.O. Box 19276, Springfield, Illinois 62794-9276 • (217) 782-2829  
James R. Thompson Center, 100 West Randolph, Suite 11-300, Chicago, IL 60601 • (312) 814-6026

PAT QUINN, GOVERNOR

DOUGLAS P. SCOTT, DIRECTOR

# Memorandum

To: Connie Tonsor, Division of Legal Counsel

From: Al Keller, Manager, Permit Section 

Date: November 30, 2010

Re: Newcomer Confinements, Inc. - Lanark  
Recommendation of Tax Certification  
Log # TC-07-09  
Property Identification # 07-09-14-200-002

**RECEIVED**  
Division of Legal Counsel

DEC 01 2010

**Environmental Protection  
Agency**

The Bureau of Water received a request on March 18, 2009 from Newcomer Confinements, Inc. for an Illinois EPA recommendation regarding the tax certification of water pollution control facilities pursuant to 35 Il. Adm. Code 125.204. We offer the following recommendation.

The water pollution control facilities in this request include the following:

Newcomer Confinements, Inc.  
21404 Cyclone Ridge Road  
Lanark, IL 61046

Part of North 1/2 of Section 14, Township 24N, Range 5E of the 4th PM in Carroll County.

Livestock waste management facilities consisting of one concrete manure pit approximately (391 ft. x 51 ft. x 8 ft. deep) with 10 concrete pump out pits approximately (5 ft. x 6 ft. x 8 ft. deep) and the portion of concrete slat flooring over the manure pits in building #3; and two 8 inch and one 6 inch manure transfer pumps.

These livestock waste management facilities are used to collect, transport and/or store livestock wastes prior to cropland application.

These facilities are further described in the enclosed applications and supporting documents.

Based on the information included in this submittal, it is our engineering judgment that the above proposed facilities may be considered "Pollution Control Facilities" under 35 IAC 125.200(a), with the primary purpose of eliminating, preventing, or reducing water pollution, or as otherwise provided in this section, and therefore eligible for tax certification from the Illinois Pollution Control Board. The Bureau of Water therefore recommends that the Board issue the requested tax certification for these facilities.

If you have any questions regarding the above, please contact Darren Gove at 217/782-0610.

SAK:DRG:TC-07-09\_Tax Cert Recommendation\_18Mar09.docx

cc: Tax Cert File

Rockford • 4303 N. Main St., Rockford, IL 61103 • (815) 987-7760  
Elgin • 595 S. State, Elgin, IL 60123 • (847) 608-3131  
Bureau of Land – Peoria • 7620 N. University St., Peoria, IL 61614 • (309) 693-5462  
Collinsville • 2009 Mail Street, Collinsville, IL 62234 • (618) 346-5120

Des Plaines • 9511 W. Harrison St., Des Plaines, IL 60016 • (847) 294-4000  
Peoria • 5415 N. University St., Peoria, IL 61614 • (309) 693-5463  
Champaign • 2125 S. First St., Champaign, IL 61820 • (217) 278-5800  
Marion • 2309 W. Main St., Suite 116, Marion, IL 62959 • (618) 993-7200

Watershed Unit Tax Certification Review Sheet

Project Name: Newcomer Confinements, Inc.

Location: Lanark

Reviewer: DRG

Date: November 24, 2010

Log number: TC-07-09

Type:  Agchem

Livestock

Applicant: Newcomer Confinements, inc.

Contact: John Newcomer

21404 Cyclone Ridge Road

Lanark, IL 61046

Phone: 815 716-0542

Facility: Newcomer Confinements, Inc.

Property ID: 07-09-14-200-002

21404 Cyclone Ridge Road

Lanark, IL 61046

County: Carroll

Legal Description:

Signature: John C. Newcomer

S: Part of North 1/2 of Section 14 Twp: 24N R:

Title: President

SE PM: 4th

Date Control Devices installed: 10/1/2009

Provided Fair cash Value: \$284,055

Wastes:  Livestock waste is applied to cropland.

Agrichemical rinsate and spillage is recycled through the facility and/or land applied.

Other: \_\_\_\_\_

Physical Description of Pollution Control Devices:

concrete pit 391' x 51' x 8' deep in Hog confinement building# 3  
10 concrete pump out pits measuring 5' x 6' x 8' deep  
concrete slatted flooring over the pit

Note\*\* I contacted John Newcomer by phone on 11/24/2010 at 3:10 pm to clarify the dimensions of the pumpout pits that were labeled in the application.

he also mentioned that he owns three pumps for the sole purpose of transferring the swine manure to a land application vehicle- the pumps include 1- 8": chopper pump, 1-6" chopper pump, and 1-8" transfer pump.

Proposed recommendations and/or denials:

Livestock waste management facilities consisting of one concrete manure pit approximately (391 ft. x 51 ft. x 8 ft. deep) with 10 concrete pump out pits approximately (5 ft. x 6 ft. x 8 ft. deep) and the portion of concrete slat flooring over the manure pits in building #3; and two 8 inch and one 6 inch manure transfer pumps.

These livestock waste management facilities are used to collect, transport and/or store livestock wastes prior to cropland application.



Illinois  
Environmental  
Protection Agency

Bureau of Water  
P.O. Box 19276  
Springfield, IL 62794-9276

August 2000

## Tax Certification Program for Livestock Waste Management Facilities

As an incentive for livestock producers to construct waste storage structures and other structures which prevent water pollution the Agency administers a tax certification program, which reduces the property tax value for many pollution control improvements. In order to recognize this tax reduction, the producer must have the improvement certified by the Illinois Environmental Protection Agency (Illinois EPA) as a pollution control facility.

Various facilities have been determined to meet the definition of a pollution control facility for livestock waste management. The following are examples of pollution control facilities for livestock waste management.

1. Manure pits under confined animal feed structures.
2. Slatted floors over manure pits.
3. Floors (not in feeding areas) specifically designed to collect and transport livestock wastes to liquid waste storage facilities.
4. Liquid livestock waste storage facilities including, but not limited to: tanks, lagoons, and holding ponds.
5. Dry manure stacking structures.
6. Feedlot runoff sediment capture basins.
7. Vegetative filter systems including, but not necessarily limited to those components designed, constructed and operated pursuant to Title 35 Illinois Administrative Code, Subtitle E, Chapter 11, Part 570 titled Design and Maintenance Criteria Regarding Runoff Field Application Systems adopted August 3, 1982.
8. Structures or other devices used specifically to divert uncontaminated runoff and roof drainage away from animal feeding facilities so as to minimize the production of feedlot runoff.
9. Roof structures specifically intended to prevent precipitation from entering livestock waste storage facilities provided that such a roof shall meet the requirement that animal feeding operations are not and also could not be normally conducted below said roof.
10. Building or structure walls specifically intended to support those roof structures described in item #9 above.
11. Tanks or other similar structures, such as methane digesters, that are specifically designed, constructed and operated for the only purpose of reducing odors from livestock wastes provided that such facilities shall meet the requirement that methane or products other than processed animal manures are not produced or collected for utilization in any purpose other than the normal operation of the facility.
12. Specific appurtenances to those facilities listed above such as pumps, pump pits, manure scrapers, ramps, manure stackers, or other devices provided that such appurtenances are designed, constructed and operated for the primary purpose of the normal operation of the pollution control facility.
13. Other facilities that meet the definition of a pollution control facility.

Once Illinois EPA has certified that the improvements made by the producer qualify as a pollution control facility, the Agency submits a copy of the certification to the producer and the Illinois Department of Revenue (IDOR). The IDOR assumes authority from the county tax assessment office to assess the value of the certified facilities based upon remaining useful lifetime and the salvage value (usually property taxes are based upon fair cash value). This reduces the assessed value of the certified facilities and, therefore, the property tax.

The date upon which the Illinois EPA received an application form from a producer determines the first assessment year that the IDOR assumes assessment jurisdiction from the county.

Pollution control facilities certified by the Illinois EPA will be assessed by the IDOR as of January 1 of the year after Illinois EPA's receipt of the tax certification application. For instance, if an application is received by the Illinois EPA on January 1, 1999, or December 31, 1999, both would come under the IDOR's assessment jurisdiction as of January 1, 2000.

RECEIVED  
MAR 16 2009

Watershed Management Section  
BUREAU OF WATER



The producer will receive the benefit of the reduced assessment for the first year the IDOR assumes jurisdiction, but it will not be reflected in the producers tax bill until the following year. All tax bills in Illinois are actually issued the year following the assessment date. For example, a tax bill will not be issued until approximately May 2001 for all property assessed as of January 1, 2000.

## ***INSTRUCTIONS***

Although the tax certification application form was originally designed for industrial use, the Agency uses it for all pollution control facilities. The following instructions indicate how to complete the application form when tax certification is being sought for livestock waste management facilities.

### **Section A - Applicant:**

Be sure to provide the property tax identification number for the parcel of land where pollution control facilities are located. Also indicate the location of the pollution control facilities by quarter section, township, range and county. This information is available on county plat maps.

### **Section B - Manufacturing Operations:**

Indicate what type of livestock waste the pollution control facilities control. Most livestock facilities in Illinois do not have or need any permits from the Illinois EPA and, therefore, the permits space can usually be left blank.

### **Section C - Manufacturing Process:**

This section does not need to be completed on applications for livestock waste management facilities.

### **Section D - Pollution Control Facility:**

The following information must be provided. Use additional paper when necessary.

Neatly sketch a diagram showing the flow of livestock waste from the animals through the pollution control facilities to final disposal on cropland. Include the locations of components such as pumps, pipes, gutter scrapers, manure pits, tanks, slotted floors, holding ponds for runoff, lagoons, methane digesters, settling basins, vegetative filters, etc.

Briefly describe the major pollution control components on the flow diagram including dimensions (length, width, depth, diameter), construction materials (steel, concrete block, etc.), and size (i.e., 10 H-P centrifugal pump).

Identify local streams, lakes, groundwater, or other waters that the pollution control facilities protect from contamination by livestock wastes. Briefly explain how the pollution control facilities prevent livestock wastes from entering these waters.

### **Section E - Pollution Control Facility Contaminants and Accounting Data:**

Generally identify the pollutants being controlled (i.e., beef feedlot runoff, swine manure, silage leachate, etc.) and points of discharge if there are any. Items 3, 4 and 5 must be completed. Be sure to sign in Section F.

Completed forms may be sent to:

Illinois EPA  
BOW/Watershed Management Section/Facility Evaluation Unit  
P.O. Box 19276  
Springfield, Illinois 62794-9276

POLLUTION CONTROL FACILITY - CONTAMINANTS	Sec. E (1) Nature of Contaminants or Pollutants	Swine Manure		
		Material Retained, Captured or Recovered		
		Contaminant or Pollutant	DESCRIPTION	DISPOSAL OR USE
		391ft x 51ft x 391ft pit	Swine Manure	Stored till it is applied on crop land
		(2) Point(s) of Waste Water Discharge	None all waste is stored in pit	
ACCOUNTING DATA		Plans and Specifications Attached	Yes <input type="checkbox"/>	No <input type="checkbox"/>
	(3)	Are contaminants (or residues) collected by the control facility?	Yes <input checked="" type="checkbox"/>	No <input type="checkbox"/>
	(4)	Date installation completed 10/1/09 status of installation on date of application	Completed	
	(5) a.	FAIR CASH VALUE IF CONSIDERED REAL PROPERTY:	\$ 284,055	
	b.	NET SALVAGE VALUE IF CONSIDERED REAL PROPERTY:	\$	
	c.	PRODUCTIVE GROSS ANNUAL INCOME OF CONTROL FACILITY:	\$ -0-	
	d.	PRODUCTIVE NET ANNUAL INCOME OF CONTROL FACILITY:	\$ -0-	
	e.	PERCENTAGE CONTROL FACILITY BEARS TO WHOLE FACILITY VALUE:	% 51	
SIGNATURE	Sec. F	The following information is submitted in accordance with the Illinois Property Tax Code, as amended, and to the best of my knowledge, is true and correct. The facilities claimed herein are "pollution control facilities" as defined in Section 11-10 of the Illinois Property Tax Code.		
		Signature	Title	
INSTRUCTIONS	Sec. G	INSTRUCTIONS FOR COMPILING AND FILING APPLICATION		
		General: Separate applications must be completed for each control facility claimed. Do not mix types (water and air). Where both air and water operations are related, file two applications. If attachments are needed, record them consecutively on an index sheet.		
	Sec. A	Information refers to applicant as listed in the tax records and the person to be contacted for further details or for inspection of facilities. Define facility location by street address or legal description. A plat map location is required for facilities located outside of municipal boundaries. The property identification number is required.		
	Sec. B	Self-explanatory. Submit copies of all permits issued by local pollution control agencies. (e.g. MSD Construction Permit)		
	Sec. C	Refers to manufacturing processes or materials on which pollution control facility is used.		
	Sec. D	Narrative description of the pollution control facility, indicating that its primary purpose is to eliminate, prevent or reduce pollution. State the type of control facility. State permit number, date, and agency issuing permit. A narrative description and a process flow diagram describing the pollution control facility. Include a listing of each major piece of equipment included in the claimed fair cash value for real property. Include an average analysis of the influent and effluent of the control facility stating the collection efficiency.		
	Sec. E	List air contaminants, or water pollution substances released as effluents to the manufacturing processes. List also the final disposal of any contaminants removed from the manufacturing processes. Item (1) - Refers to pollutants and contaminants removed from the process by the pollution control facility. Item (2) - Refers to water pollution but can apply to water-carried wastes from air pollution control facilities. Submit drawings, which clearly show (a) Point(s) of discharge to receiving stream, and (b) Sewers and process piping to and from the control facility. Item (3) - If the collected contaminants are disposed of other than as wastes, state the disposition of the materials, and the value in dollars reclaimed by sale or reuse of the collected substances. State the cost of reclamation and related expense. Item (4) - State the date which the pollution control facility was first placed in service and operated. If not, explain. Item (5) - This information is essential to the certification and assessment actions. This accounting data must be completed to activate project review prior to certification by this Agency.		
	Sec. F	Self-explanatory. Signature must be a corporate authorized signature.		
	Submit to:	Attention:	Attention:	
	Illinois EPA P.O. Box 19276 Springfield, IL 62794-9276	Al Keller Permit Section Division of Water Pollution Control	Donald E. Sutton Permit Section Division of Air Pollution Control	

cement  
\$195,555.  
\$88,500 -  
Slats

10-07-09

\*\*\*\*\* PCB 11-030 \*\*\*\*\*  
 APPLICATION FOR CERTIFICATION (PROPERTY TAX TREATMENT)  
 POLLUTION CONTROL FACILITY  
 AIR  WATER

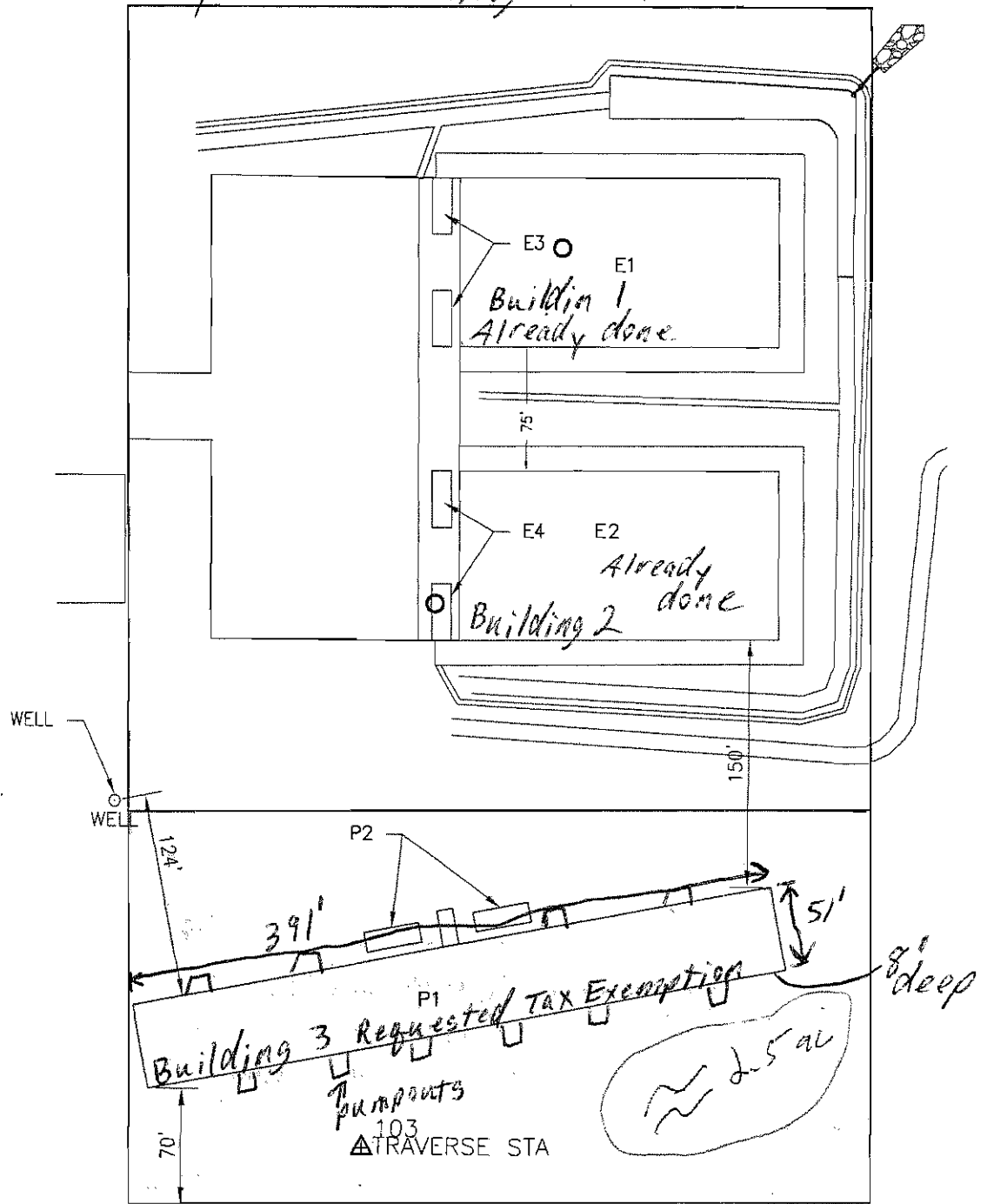
ILLINOIS ENVIRONMENTAL PROTECTION AGENCY  
 P. O. Box 19276, Springfield, IL 62794-9276

This Agency is authorized to request this information under Illinois Revised Statutes, 1979, Chapter, 120, Section 502a-5. Disclosure of this information is voluntary. However, failure to comply could prevent your application from being processed or could result in denial of your application for certification.

FOR AGENCY USE

File No.	Date Received	Certification No.	Date	
Sec. A  APPLICANT	Company Name <i>Newcomer Confinements Inc.</i>			
	Person Authorized to Receive Certification <i>Newcomer Confinements Inc</i>		Person to Contact for Additional Details <i>John C. Newcomer</i>	
	Street Address <i>21404 Cyclone Ridge Rd</i>		Street Address <i>26589 US Hwy 52</i>	
	Municipality, State & Zip Code <i>Lanark, IL 61046</i>		Municipality, State & Zip Code <i>Lanark, IL 61046</i>	
	Telephone Number <i>815-716-9542</i>		Telephone Number <i>815-716-0542</i>	
	Location of Facility Quarter Section <i>24N</i> <i>NW/NE sec 14</i>	Township <i>Salem</i>	Range <i>5E</i>	Municipality Township <i>Lanark Rock Creek</i>
	Street Address <i>21404 Cyclone Ridge Rd</i>		County Book Number <i>Carroll</i>	
	Property Identification Number <i>07-09-14-200-002</i>		Parcel Number	
Sec. B  MANUFACTURING OPERATIONS	Nature of Operations Conducted at the Above Location <i>Wean to finish swine feeding</i>			
	Water Pollution Control Construction Permit No.	Date Issued		
	NPDES PERMIT No. <i>Facility ID# LF0150090001</i>	Date Issued	Expiration Date	
	Air Pollution Control Construction Permit No.	Date Issued		
	Air Pollution Control Operating Permit No.	Date Issued		
Sec. C  MANUFACTURING PROCESS	Describe Unit Process			
	Materials Used in Process			
Sec. D  POLLUTION CONTROL FACILITY DESCRIPTION	Describe Pollution Abatement Control Facility <i>Building 3 is a confined 8' deep pit hog building manure falls through slats and is stored all year in the pit. Manure is then mixed tested and applied to surrounding cropland in the fall in accordance with our manure management plan and on attached sheet EPA Regulations</i>			

*cyclone ridge Rd*





7615 North Harker Drive  
Peoria, Illinois 61615  
TEL 309-693-7615  
FAX 309-693-7616

Carroll Co., Illinois

Joseph D. Stutz, PE, PLS

[jdstutz@maurerstutzinc.com](mailto:jdstutz@maurerstutzinc.com)

Transportation Municipal Industrial Land Development Environmental Construction  
Structural Mechanical Electrical Water Wastewater Hydrologic Traffic Surveying

PEORIA Δ CANTON

## Legal Description

A part of the North Half of Section 14, Township 24 North, Range 5 East of the Fourth Principal Meridian, Carroll County, Illinois, more particularly described as follows:

Commencing at a railroad spike at the Northwest Corner of said Section 14, thence North 89°-22'-03" East (bearings assumed for description purposes only) along the north line of said Section 14, a distance of 3126.72 feet; thence South 0°-41'-12" East 484.00 feet to an iron pipe, said iron pipe being the Point of Beginning of the Parcel to be described:

From the Point of Beginning, thence continuing South 0°-41'-12" East 237.00 feet to an iron pipe set; thence South 89°-22'-03" West 450.00 feet to an iron pipe set; thence North 0°-41'-12" West 237.00 feet to an iron pipe; thence North 89°-22'-03" East 450.00 feet to the Point of Beginning.

Said Parcel contains 2.448 acres, more or less.

Prepared by:  
Maurer-Stutz, Inc.  
7615 North Harker Drive  
Peoria, Illinois 61615  
Project No.238-05009E

POA ?

**CARROLL COUNTY**  
**DIANE L. POWERS, COUNTY TREASURER**  
 P.O. BOX 198  
 MOUNT CARROLL, IL 61053-0198

# 2007 REAL ESTATE TAX BILL

PLEASE READ the instructions on the back of this bill regarding when and where to pay your taxes. Additional information is provided for changing your mailing address and tax exemptions in which you might be entitled.

The County Treasurer only collects your taxes and is not responsible for the amount of your assessment or the amount of your tax bill. We will be happy to assist you or direct you to the proper authority regarding questions about your tax bill.

**THIS IS THE ONLY NOTICE YOU WILL RECEIVE FOR BOTH INSTALLMENTS.**

ASSESSED TO: **NEWCOMER CONFINEMENTS INC**

NEWCOMER CONFINEMENTS INC  
 %NEWCOMER JOHN C  
 26589 US HIGHWAY 52  
 LANARK IL 61046-0000



PROPERTY DESCRIPTION		PARCEL NUMBER	
R AC IN NW NE SEC 14 T24 R5 SPLIT (2005) 07-000-099-10		07-09-14-200-002	
ACRES	TAXABLE VALUE		
5.00	104,384		
CLASS CODE	TAX CODE		
0011	07008		
LOCATION OF PROPERTY		TOWNSHIP	
21404 CYCLONE RIDGE RD LANARK, IL		Salem Township	

RECEIPT PORTION - KEEP FOR YOUR RECORDS  
**2007 CARROLL COUNTY REAL ESTATE TAX**  
 PAY TO: **CARROLL COUNTY TREASURER**

BASE	0
LAND	0
STRUCTURES/BLDG.	0
FARM BLDG	103,416
FARM LAND	968
BD OF REVIEW EQUALIZED VALUE	= 104,384
HOME IMPROVEMENT EXEMPTION	- 0
DISABLED VETERANS' EXEMPTION	- 0
VALUE PRIOR TO STATE EQUALIZE	= 104,384
STATE EQUALIZATION FACTOR***	X 1.0000
STATE EQUALIZED VALUE	= 104,384
OWNER OCCUPIED EXEMPTION	- 0
SENIOR HOMESTEAD EXEMPTION	- 0
SENIOR ASSESSMENT FREEZE	- 0
DISABLED PERSONS' EXEMPTION	- 0
RETURNING VETERANS' EXEMPTION	- 0
DISABLED VETERANS' EXEMPTION	- 0
MISC EXEMPTION	- 0
TAXABLE VALUE	= 104,384
TAX RATE	X 5.31568
TOTAL TAX	= \$5,548.72

TAXING BODY	PRIOR RATE	PRIOR AMOUNT	CURRENT RATE	CURRENT AMOUNT	% OF TOTAL
CARROLL COUNTY	0.55850	\$1,574.20	0.51408	\$536.61	9.05
CARROLL COUNTY PENSION	0.13850	\$0.00	0.12984	\$135.54	2.29
LANARK FIRE	0.14923	\$337.04	0.19510	\$263.65	3.43
HIGHLAND JC 519	0.45795	\$1,054.20	0.46070	\$480.90	8.11
HIGHLAND JC 519 PENSION	0.00881	\$0.00	0.00818	\$8.54	0.14
MULTI-TWP ASSESSMT	0.01772	\$40.02	0.01700	\$17.75	0.30
SALEM TWP	0.70671	\$1,686.28	0.30661	\$320.05	5.40
SALEM TWP PENSION	0.03991	\$0.00	0.03744	\$39.08	0.66
SALEM R&B	0.00000	\$0.00	0.37343	\$389.80	6.57
EASTLAND SCHOOL 308	3.49376	\$8,136.40	3.16821	\$3,327.98	56.13
EASTLAND SCHOOL 308 PENSION	0.10874	\$0.00	0.08509	\$88.82	1.50
<b>Totals</b>	<b>5.67983</b>	<b>\$12,828.14</b>	<b>5.31568</b>	<b>\$5,548.72</b>	

*Buildings 1&2 only*

\*\*\*NOT TO BE USED FOR FARM LAND AND FARM BUILDINGS

INTEREST 1% PER MONTH	TOTAL TAX DUE
	\$5,548.72
1977 EQUALIZED VALUE	FAIR MARKET VALUE
0	

FIRST INSTALLMENT	07/25/2008	AMOUNT:	\$2,774.36	SECOND INSTALLMENT	09/05/2008	AMOUNT:	\$2,774.36
DUE DATE:				DUE DATE:			

I John C Newcomer the President of Newcomer Confinements Inc. ( a wean to finish confined swine feeding operation) am seeking property tax certification. For only the concrete pit and concrete slats under the south building (building 3) located at 21404 Cyclone Ridge Rd lanark, Il. The concrete pit is 391 feet by 51 feet and 8 feet deep covered completely on top by concrete gang slats. The concrete pit has 10 concrete pump-outs measuring 5 feet by 6 feet by 8 feet deep.



RECEIVED  
MAR 18 2009

Watershed Management Section  
BUREAU OF WATER



PRECISION STRUCTURES  
INCORPORATED

1204 First Avenue North Wellman, Iowa 52356-0029 Ph. (319) 646-2430  
FAX (319) 646-2471

Precision Structures, Inc., Wellman, Iowa agrees to furnish the items listed below and/or on the attached list and owner agrees to take delivery and pay for such items under the terms listed hereunder. Payment for materials is net and all money for materials is due upon delivery. All invoices are considered delinquent if not paid within 5 days of receipt and customer agrees to pay 1.5% interest after the 5<sup>th</sup> day if not paid. Owner agrees to assume all liability for materials (and carry insurance to cover replacement value of materials) and hereby waives all rights of subrogation under the owner's policy of insurance. The risk of loss for materials passes to owner upon delivery to owner's premises or building site.

Precision Structures will gather all scrap material in one area. Any excess material and/or equipment not deemed scrap by Precision Structures remains the property of Precision Structures. It is the owner's responsibility to dispose of that which is determined to be scrap material by Precision Structures.

Any concrete work involved pursuant to this agreement is not guaranteed against cracking or leaking. Reasonable precautions, normal to the swine confinement construction industry, shall be taken by the contractor, but cracks do frequently occur and cannot be reasonably prevented.

Building and equipment are covered by a 90 day warranty for materials and labor, from the date animals enter the building and/or the building is deemed complete by Precision Structures. After 90 days the owner is responsible for all repairs and maintenance. Normal maintenance is the responsibility of the owner. Building may not be used until Precision Structures has received all payments. Agreement is considered executed by signature of both parties.

*\$560,000. total project cost*

51'2" X 391'1" P.S.I.'s 2400 Head Small Pen Design Wean To Finish Facility

- per attached copies

\$512,554.<sup>00</sup> Total Contract Amount (Includes all current applicable promotional discounts and rebates)

2,000.<sup>00</sup> Amount Due Upon Signing of Order

*17,055. +* 89,500.<sup>00</sup> Amount Due Upon Starting of Concrete (17.5%)

89,000.<sup>00</sup> Amount Due Upon Completion of Concrete Pit (17.5%)

*extra 4' concrete on footing* 88,500.<sup>00</sup> Amount Due Upon Delivery of Slats (17.5%)

179,000.<sup>00</sup> Amount Due Upon Delivery of Building (35%)

62,554.<sup>00</sup> Amount Due Upon Delivery of Equipment (Balance of total)

2,000.<sup>00</sup> Amount Due Upon Completion (No more than signing of order)

Kerry Smith 1-18-08 John Newcomer 1-18-08  
Kerry Smith, Sales Rep. Date Owner - John Newcomer Date

Claude J. Greiner, Pres. Date

Basic Building Color: All white Trim Color: All white

Circle for trim color: gables corner eave/fascia rake Other: \_\_\_\_\_

Note: Owner agrees that if building is not constructed by 2008, owner will pay all price increases





Rod R. Blagojevich, Governor  
Thomas E. Jennings, Acting Director

**Bureau of Environmental Programs**

State Fairgrounds • P.O. Box 19281 • Springfield, IL 62794-9281 • 217/785-2427 (voice/TDD) • Fax 217/524-4882  
Pesticide Misuse Hotline 1-800-641-3934 (voice/TDD)

**LIVESTOCK WASTE PROGRAM**  
**INITIAL NOTICE OF CONSTRUCTION PLAN COMPLETENESS**  
**Non-Lagoon Livestock Waste Handling Facility**

**Registrant:**

John Newcomer  
26589 US Highway 52  
Lanark, IL 61046

**Facility Location:**

Lanark  
**Facility ID#**  
LF0150090001

**Date Issued: June 11, 2008**

A Notice of Non-Lagoon Construction Plan Completeness is hereby granted to the above-designated registrant to construct a single livestock waste handling facility *as stated in the construction plan application submitted to the Department as follows:*

Construction of a single livestock waste handling facility that shall have the following dimensions:

Maximum Length =	391 feet
Maximum Width =	51 feet
Maximum Depth =	8 feet
Total Design Capacity =	155,000 ft <sup>3</sup>

*Pursuant to 35 Illinois Administrative Code 506.304 (c), this structure shall include a perimeter foundation drain, which must include a sampling port to allow for quarterly sampling pursuant to 8 Illinois Administrative Code 900.511.*

The construction plan for the aforementioned structure has been reviewed and deemed complete by the Illinois Department of Agriculture pursuant to the Livestock Management Facilities Act (Act), 510 Illinois Compiled Statutes 77/13.

Pursuant to 510 ILCS 77/13(g), an initial site inspection was conducted by a representative of the Department on March 10, 2008.

Please be advised that, pursuant to the Act and rule, the Department shall make additional site inspections during the construction and post-construction phase and shall require modifications when necessary to ensure the project shall be in compliance with the requirements of the regulation. **Please notify the Department at least 5 days prior to the commencement of construction.**

Further, pursuant to 510 ILCS 77/13(f), upon completion of construction but prior to the placing of the structure in service, the owner or operator shall certify to the Department that the structure has been constructed or modified in accordance with the requirements of the Act and rule and that the information

STATE OF ILLINOIS

COUNTY OF SANGAMON

)  
)  
)  
)  
)

**PROOF OF SERVICE**

I, the undersigned attorney at law, hereby certify that on December 15, 2010, I served true and correct copies of an **APPEARANCE AND THE RECOMMENDATION**, upon the persons and by the methods as follows:

[1<sup>st</sup> Class U.S. Mail]

Steve Santarelli  
Illinois Department of Revenue  
101 West Jefferson  
Post Office Box 19033  
Springfield, Illinois 62794

[1<sup>st</sup> Class U.S. Mail]

John Newcomer  
26589 U.S. Hwy 52  
Lanark, Illinois 61046

[Electronic Filing]

Clerk  
Illinois Pollution Control Board  
James R. Thompson Center  
100 West Randolph Street, Suite. 11-500  
Chicago, Illinois 60601

ILLINOIS ENVIRONMENTAL PROTECTION AGENCY

/s/ Vera Herst  
Assistant Counsel  
Division of Legal Counsel  
1021 North Grand Avenue East  
P.O. Box 19276-  
Springfield, Illinois 62794-9276  
217.782.5544  
217.782.9143 (TDD)

**THIS FILING IS SUBMITTED ON RECYCLED PAPER**